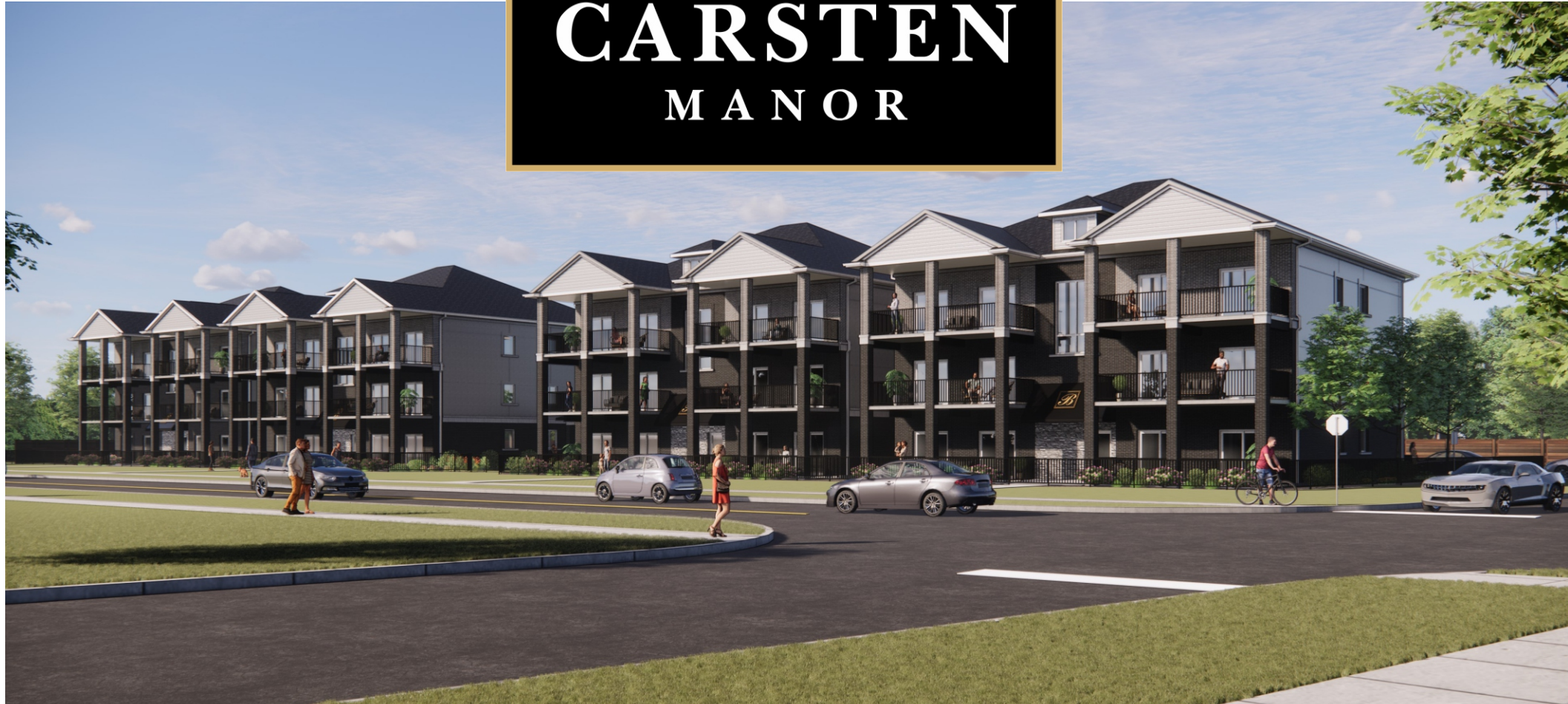




# CARSTEN MANOR



Another Development By



**BROTTO DEVELOPMENT  
CORPORATION**



**SUBURBAN  
CONSTRUCTION & MANAGEMENT LTD.**

519.735.1800

SALES@BROTTO.CA

WWW.BROTTO.CA



## Development Highlights

- ✔ **Elevator:** Enjoy convenient access to your suite.
- ✔ **Steel and Concrete Construction:** Experience exceptional durability and sound.
- ✔ **Large Patios and Balconies:** Embrace the serenity of outdoor living spaces, perfect for relaxation and entertaining.
- ✔ **Only Six Suites per Building and 3 Floors:** Enjoy a sense of exclusivity and privacy.



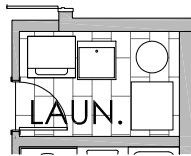
- ✔ **Parking:** Dedicated parking spots offers a convenient and hassle free solution.
- ✔ **Landscaping:** Beautifully manicured and fully fenced grounds.
- ✔ **Refuse:** Individual recycling bins and a dedicated exterior garbage center.
- ✔ **Location:** Just steps away you find spectacular trails, the lake and so much more.



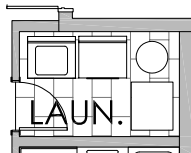
**AMENITIES - BBQ PAVILION & FIRE PIT**



LAUNDRY OPTIONS:  
1. STACKED W/D + SINK



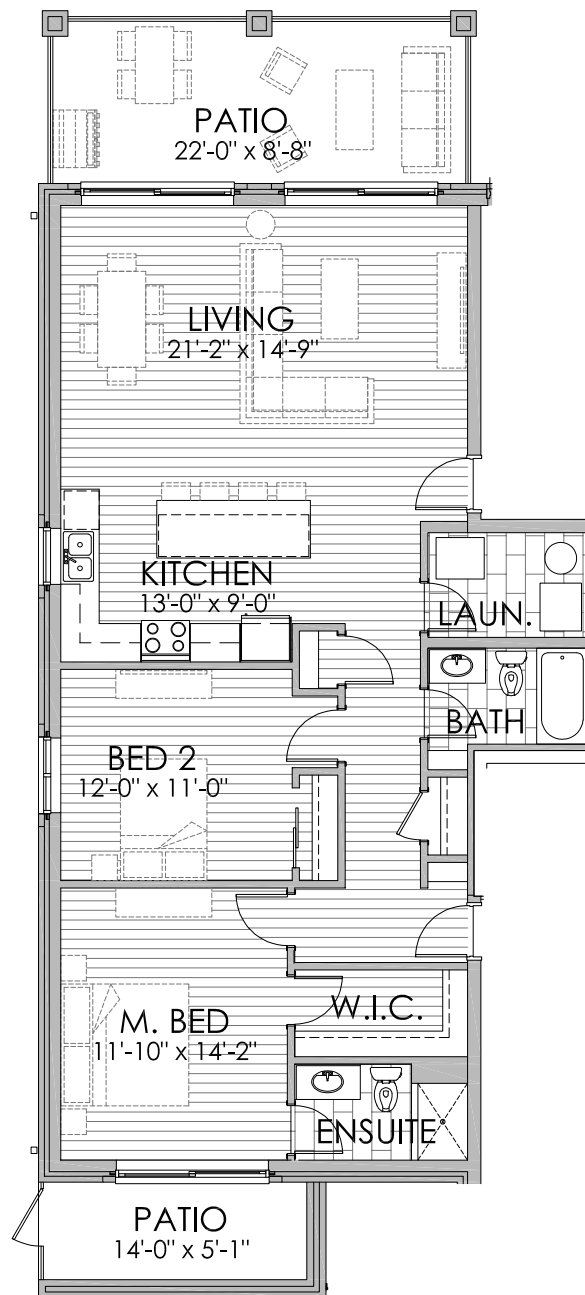
2. SIDE-BY-SIDE W/D



FIRST FLOOR

**SUITE 101**

**2 BEDROOM - 2 BATH - 1,524**

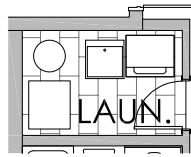


**BROTTO DEVELOPMENT  
CORPORATION**

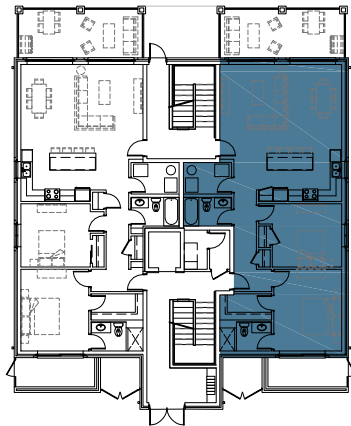
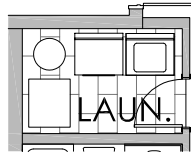
**519-735-1800**



LAUNDRY OPTIONS:  
1. STACKED W/D + SINK



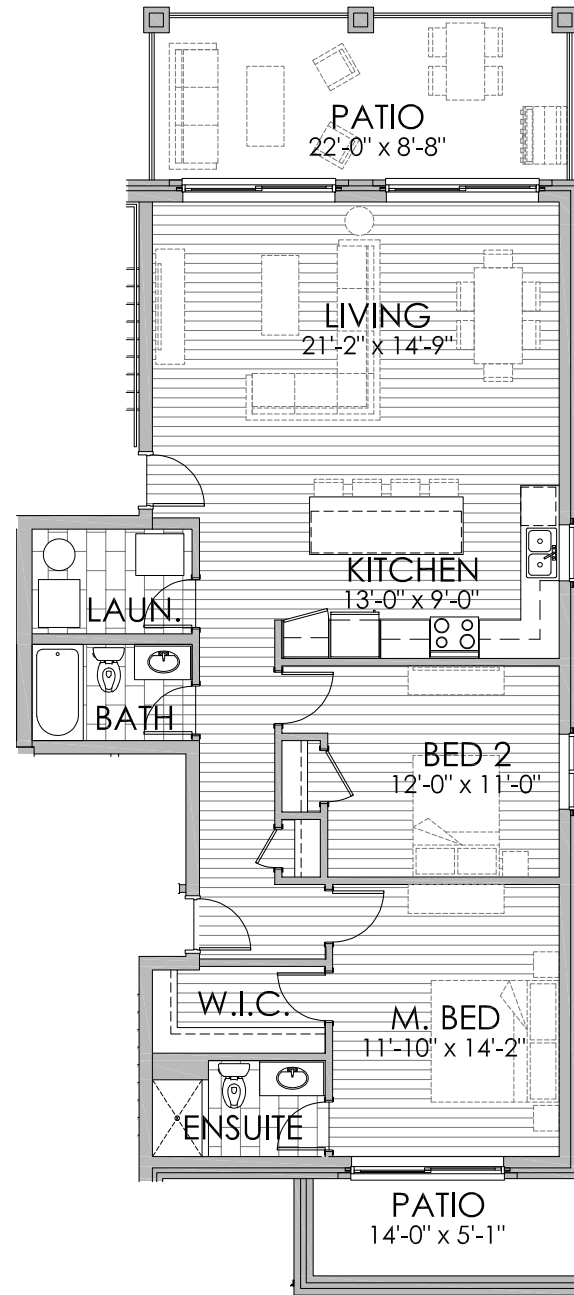
2. SIDE-BY-SIDE W/D



FIRST FLOOR

**SUITE 102**

**2 BEDROOM - 2 BATH - 1,503**

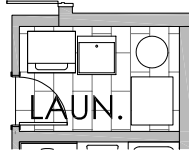


**BROTTO DEVELOPMENT  
CORPORATION**

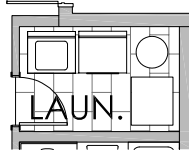
**519-735-1800**



LAUNDRY OPTIONS:  
1. STACKED W/D + SINK



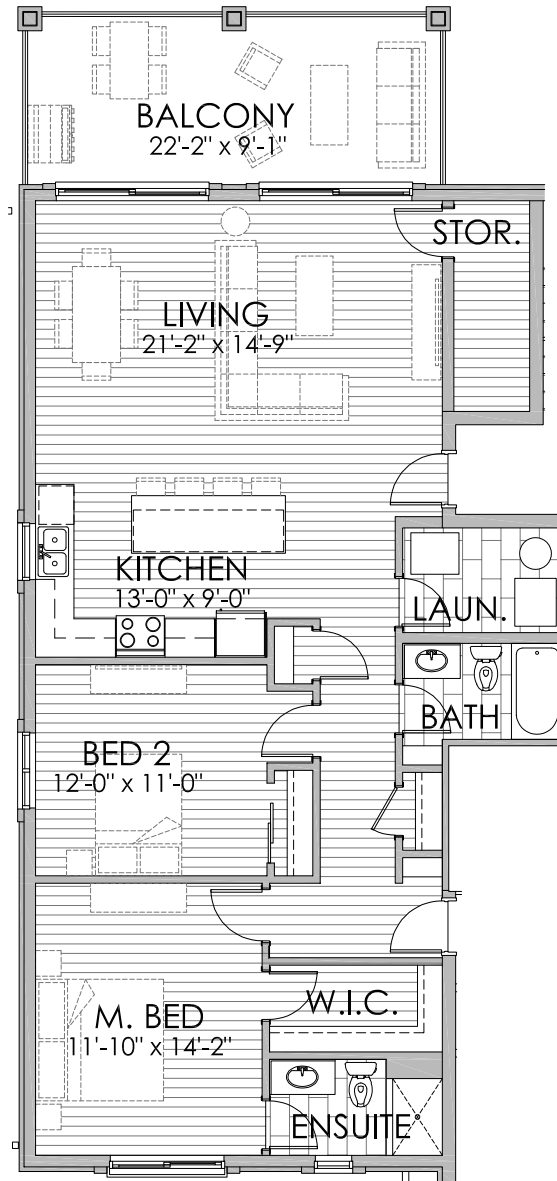
2. SIDE-BY-SIDE W/D



SECOND FLOOR

SUITE 201

2 BEDROOM - 2 BATH - 1,531

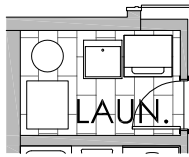


**BROTTO DEVELOPMENT  
CORPORATION**

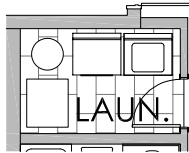
519-735-1800



LAUNDRY OPTIONS:  
1. STACKED W/D + SINK



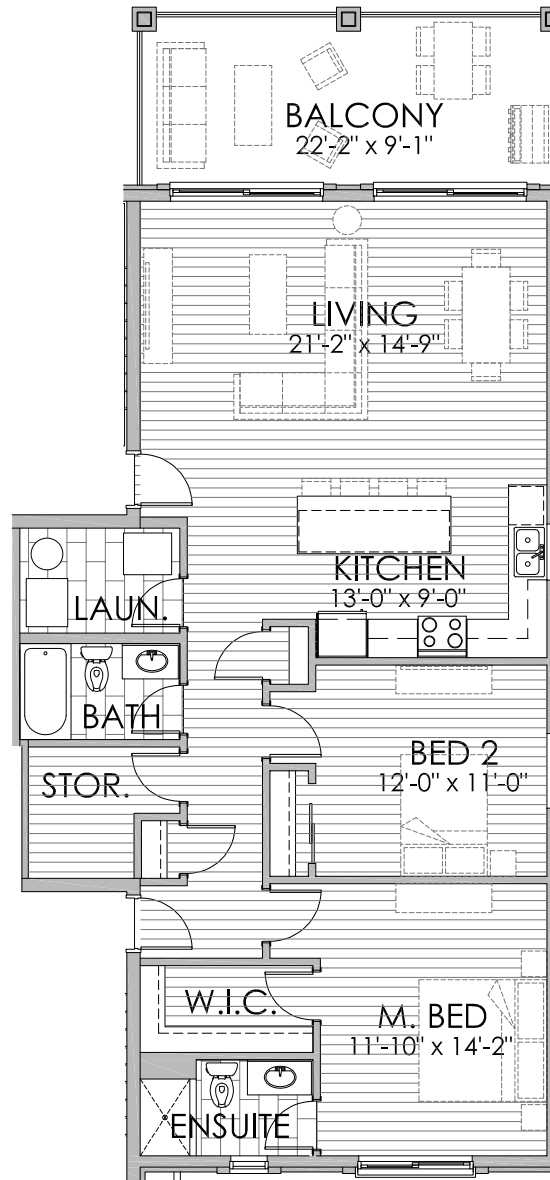
2. SIDE-BY-SIDE W/D



SECOND FLOOR

**SUITE 202**

**2 BEDROOM - 2 BATH - 1,521**



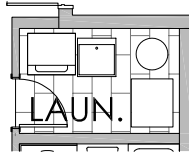
**BROTTO DEVELOPMENT  
CORPORATION**

**519-735-1800**

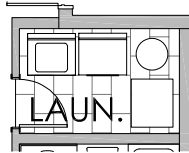




LAUNDRY OPTIONS:  
1. STACKED W/D + SINK



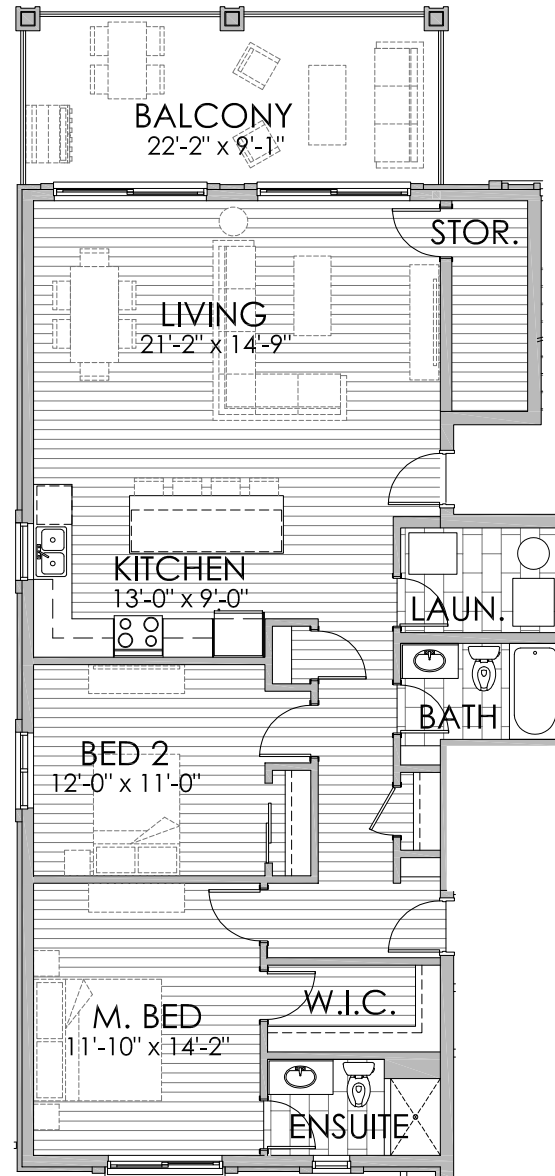
2. SIDE-BY-SIDE W/D



THIRD FLOOR

**SUITE 301**

**2 BEDROOM - 2 BATH - 1,531**

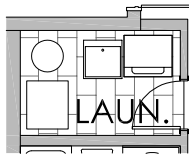


**BROTTO DEVELOPMENT  
CORPORATION**

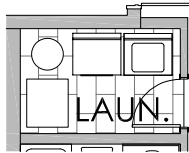
519-735-1800



LAUNDRY OPTIONS:  
1. STACKED W/D + SINK



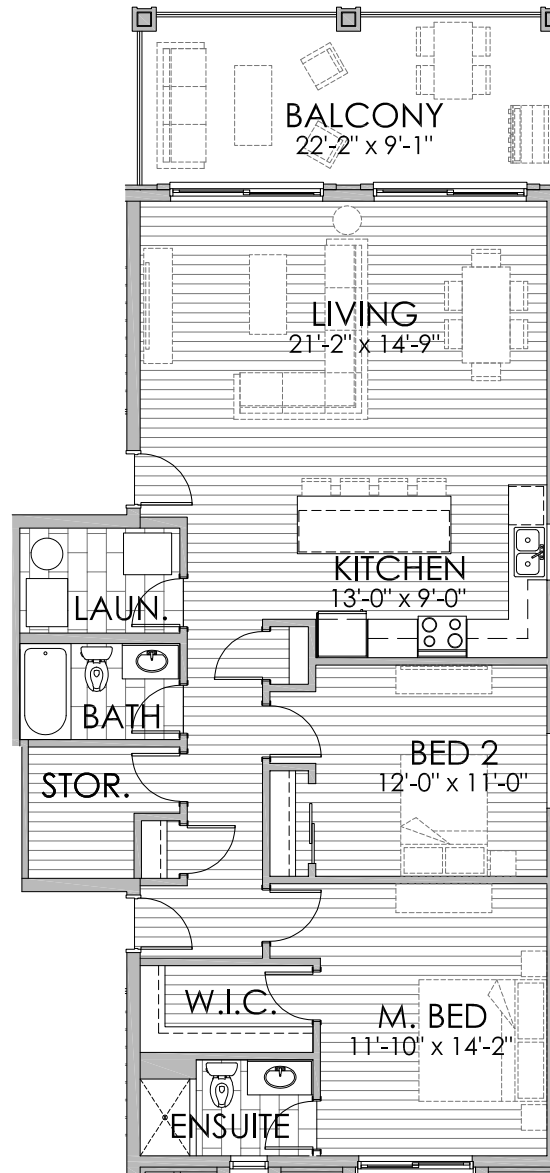
2. SIDE-BY-SIDE W/D



THIRD FLOOR

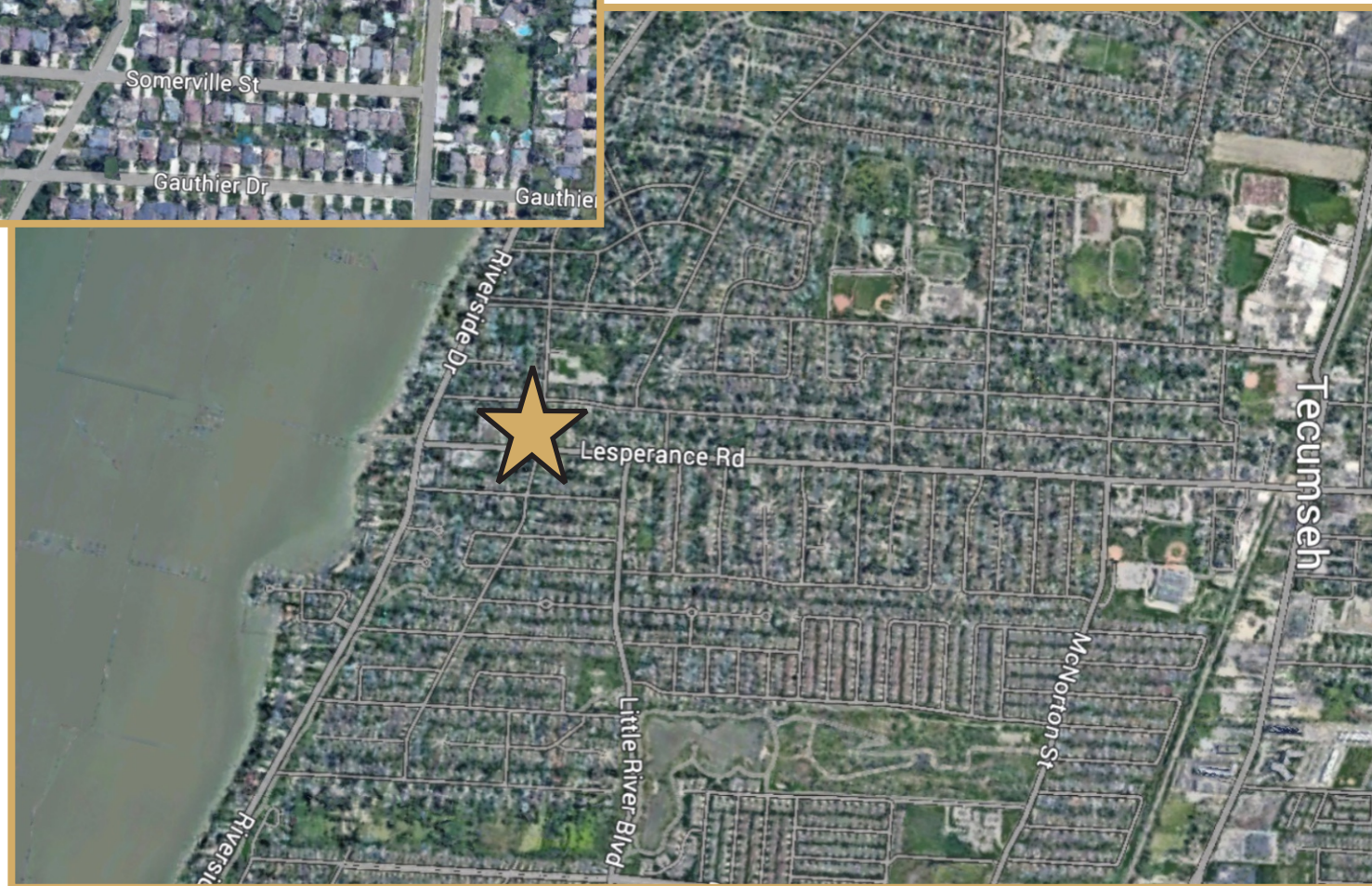
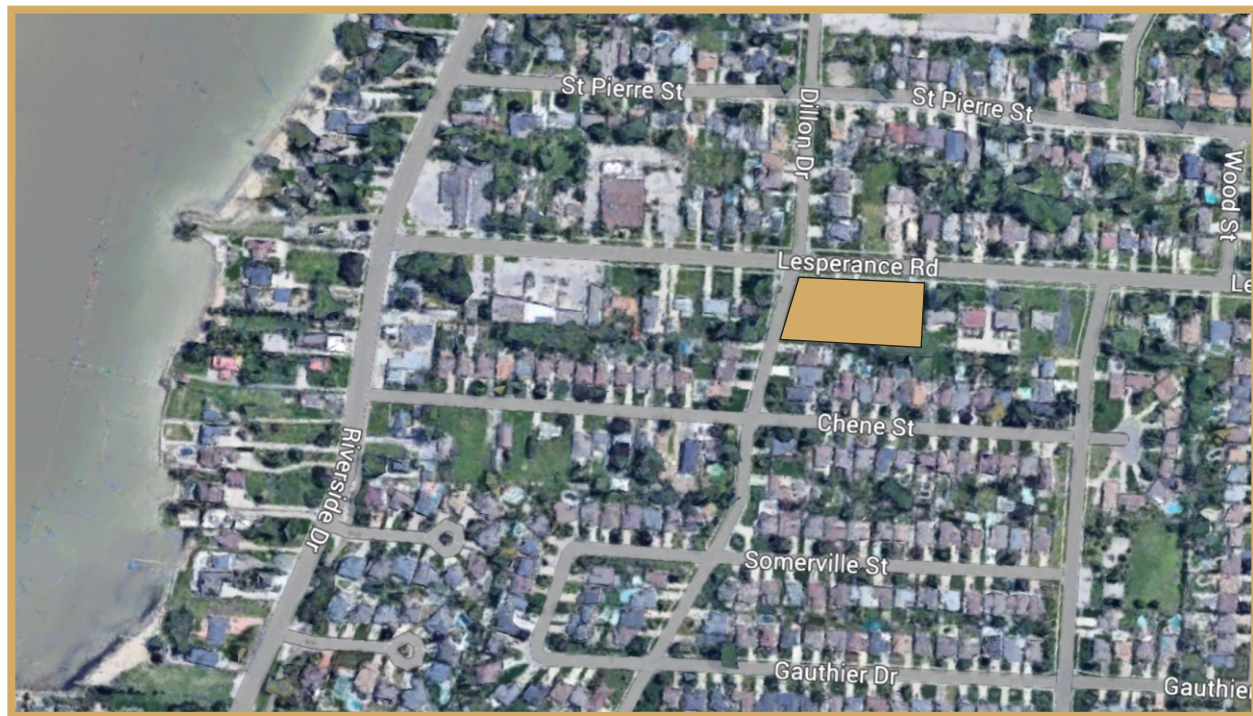
SUITE 302

2 BEDROOM - 2 BATH - 1,521



**BROTTO DEVELOPMENT  
CORPORATION**

519-735-1800



**PREMIER LOCATION: 205-227 LESPERANCE ROAD, TECUMSEH**



## DEVELOPMENT TEAM

### A TRUE FAMILY BUSINESS DATING BACK TO 1957

Brotto Development Corporation is a fully integrated real estate holding company and developer with a focus on the acquisition, development and re-development of commercial and residential properties in Southwestern Ontario.

Suburban Construction, a division of BDC is a full service contractor registered with Tarion Warranty Corporation. SC prides itself on managing and building it's projects with the highest level of care and attention to every detail.

Recently completed multifamily residential developments include:

- The Fairview - Riverside
- The Edgar - Riverside
- LA Suites - LaSalle

Suburban has a rich and storied history that dates back to 1957 when Tarcisio Brotto established Suburban Builders.

The company has been built on principles of integrity, quality craftsmanship, and a commitment to excellence in the construction industry. Throughout the years, Suburban has emerged as a leader in southwestern Ontario, leaving an indelible mark on the landscape.

Today, the legacy of Suburban lives on through the dedication and vision of Tarcisio's son, Andrew Brotto and his two grandsons, Alex LeFave and Christian LeFave. They carry forward the family tradition, ensuring that Suburban continues to uphold the highest standards of craftsmanship, innovation, and customer satisfaction.

With a strong foundation rooted in over six decades of experience, Brotto Development Corporation and Suburban Construction work each day to honor the timeless values instilled by its founder Tarcisio.

